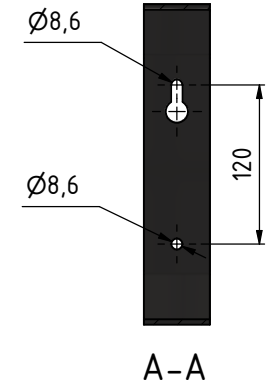
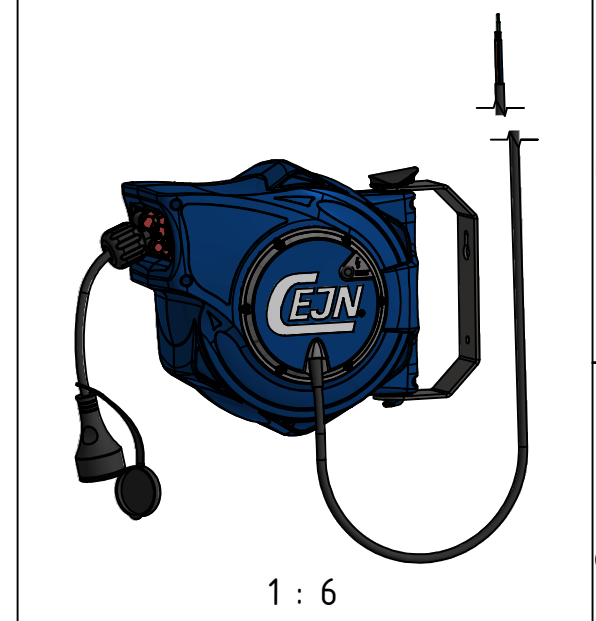
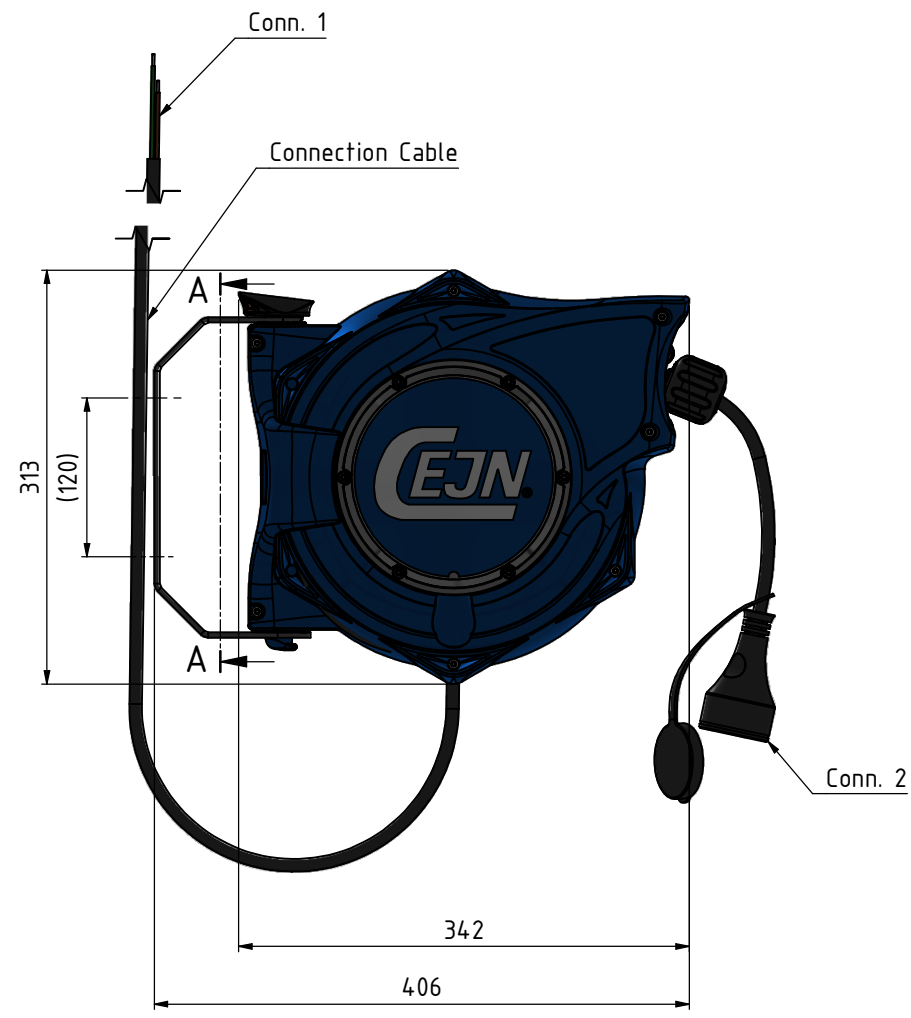
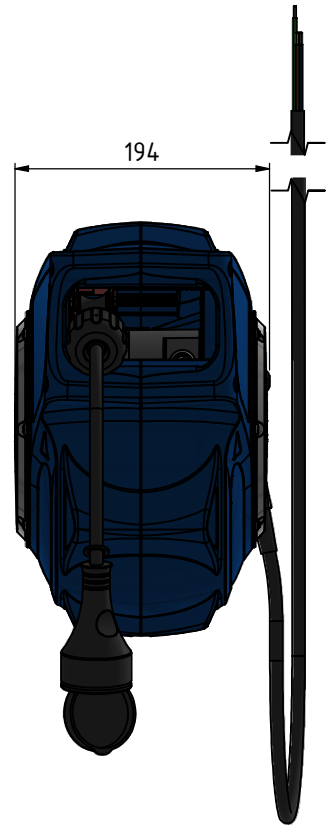


This document must not be copied, either completely or in part, without permission. Any infringement will have legal consequences ©



**Technical Data:**  
 Connection cable length: 1,25m  
 Cable type: H07RN-F 3x1,5mm<sup>2</sup>  
 Connection voltage: ~250V  
 Maximum Load (Retracted): 1600 Watt @ 240V~ (7A)  
 Maximum Load (Extended): 2400 Watt @ 240V~ (10A)  
 Insulation Class: IP44  
 Temperature range: -10°C - +50°C (41°F - +122°F)

Product Data - Small Reels Electrical				
Art.no.	Cable length	Conn. 1	Conn. 2	Weight (kg)
19 911 2350	10m	3x1,5mm <sup>2</sup>	IP44 SCHUKO-Plug	5,9
19 911 2351	10m	3x1,5mm <sup>2</sup>	IP44 CH-Plug	5,9



Scale	1 : 4	Drawn	JOOL	Checked	LHE	Appr.	OG	ECO	000658	Date	2020-08-12
Drawing No.							509119913		Issue	AA 1 / (1)	